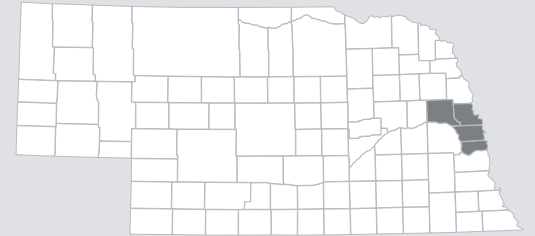




The Economic Value of Metropolitan Community College

The MCC Four County Service Area, Nebraska



About MCC

21,101 Credit students

6,190 Non-credit students

2,325 Employees

1 out of every **63**

jobs in the MCC Four County Service Area is supported by the activities of MCC and its students.

ECONOMIC IMPACT ANALYSIS



Alumni impact

Impact of the increased earnings of MCC alumni and the businesses they work for

\$560.5 million

Added income

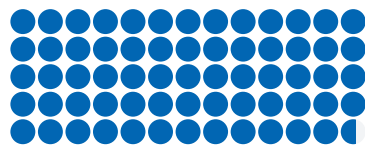
6,459 Jobs supported



An economic boost similar to hosting the World Series

93x

OR



Operations spending impact

Impact of annual payroll and other spending

\$96.2 million

Added income

2,265 Jobs supported



Enough to buy **2,866** new cars

OR



Student spending impact

Impact of the daily spending of MCC students retained in the region

\$11.6 million

Added income

211 Jobs supported



Enough to buy **932** families* a year's worth of groceries

OR



Construction spending impact

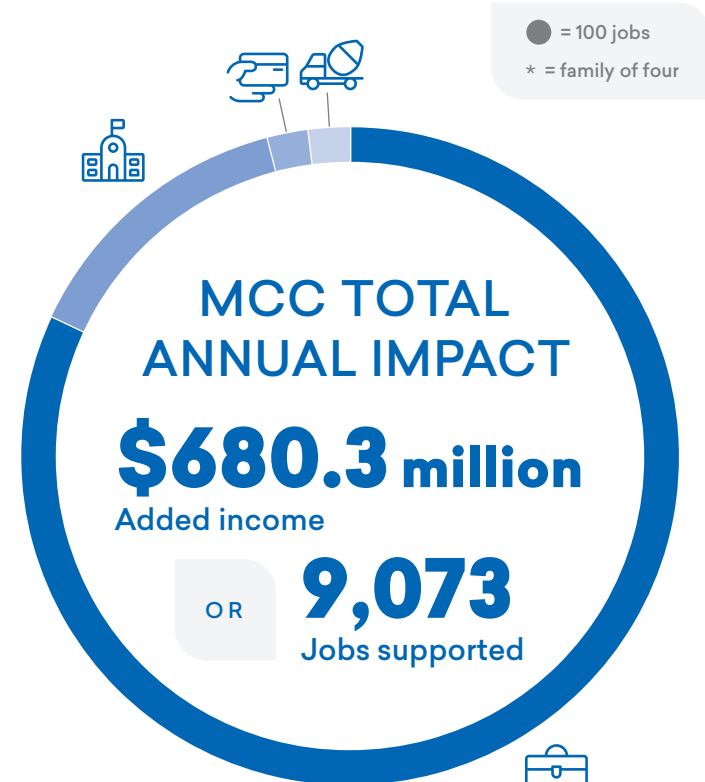
Impact of expenditures for ongoing construction projects

\$12 million

Added income

138 Jobs supported

OR



INVESTMENT ANALYSIS



For every \$1...



Students gain **\$8.10** in lifetime earnings



Taxpayers gain **\$1.20** in added tax revenue and public sector savings



Society gains **\$7.50** in added income and social savings



The average associate degree graduate from MCC will see an increase in earnings of **\$10,800** each year compared to someone with a high school diploma working in Nebraska.

